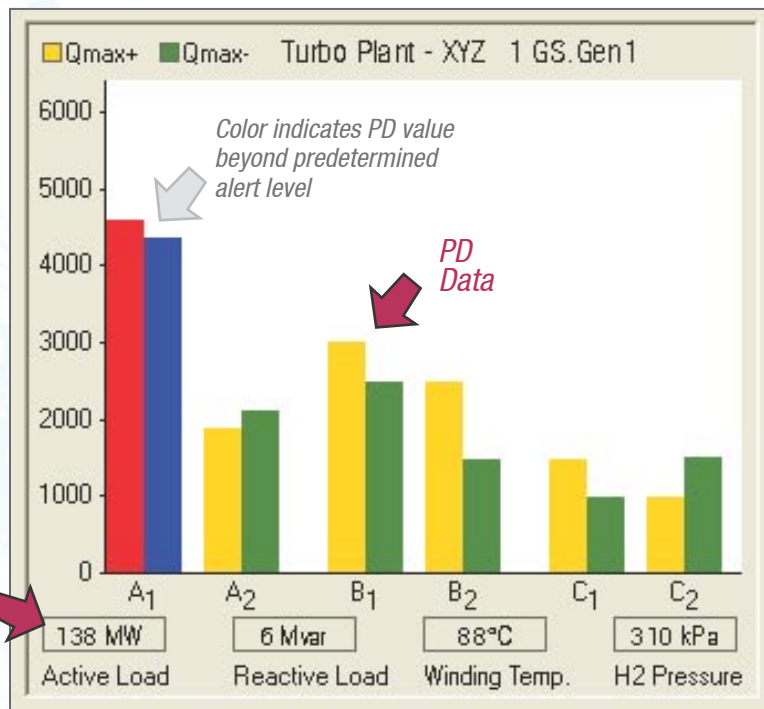


Continuous Online Partial Discharge Monitoring of Stator Winding Condition for Generator Stations and Industrial Plants



PD data and associated operating conditions are automatically collected and displayed together on the remote PC Screen

Connect to New or Existing Local Area Network

- All Partial Discharge Data Acquisition Units are connected to the Central PC/Control Room through the LAN (CAT5 cable, fibre optic cable or wireless)

COPA PD Analysis Software

- Automatically updates and displays PD activity
- 3D phase-resolved graphs ease diagnosis and confirm noise rejection
- Alerts user when predefined PD thresholds are exceeded.
- **PD Long Term Trending™** with user-selectable graphs, scales and time periods to show progression of stator insulation deterioration

Monitor multiple machines to identify problems and reduce the risk of forced outages

The ADWEL **COPA™** system continuously measures Partial Discharge data and other machine operating parameters. Operators can interpret data and monitor stator winding condition with the included ADWEL **COPA™** PD Analysis software suite.

Partial Discharge Acquisition Unit

- Automatically captures PD pulse data from permanently installed capacitive couplers. (Couplers may be pre-existing or newly installed)
- Accepts inputs from 3 to 24 couplers per generator



ADAU (Shown in optional stand-alone case)

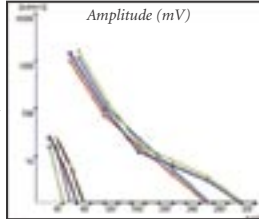
Analog Data Acquisition Unit

- Eliminates need for manual data collection
- Records generator operating conditions
 - Active load
 - Stator temperature
 - Reactive load
 - Humidity or hydrogen pressure
- Collects data for up to 6 generators
- Red LEDs indicate alert status for each phase
- Outputs include Qmax and PD Alert Signals for each phase

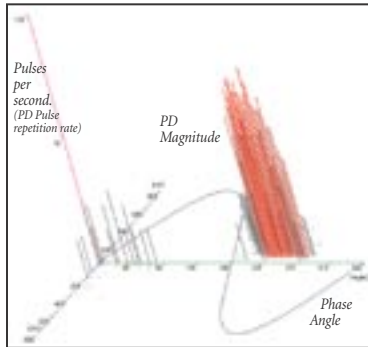
Continuous On-line Partial Discharge Analysis

Find and Identify the Source of PD Signals

Phase resolved results indicate where the PD is occurring relative to the voltage sine wave. This helps identify the type of PD activity, (e.g. end winding discharge), and confirm the rejection of noise.



Compare Multiple Files



The PDA Trending graph compares multiple test results to show any increase in PD activity over time.

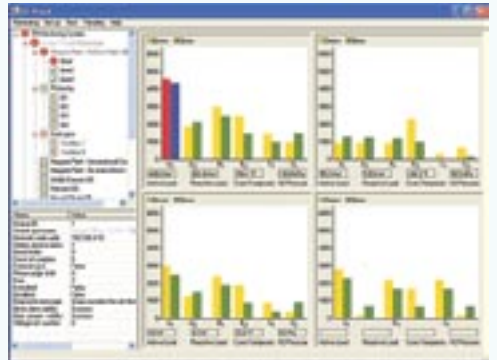
COPA System Includes:

- 1 PD Data Acquisition Unit per generator/motor** (up to 24 capacitive couplers per rotating machine)
- 1 Analog Data Acquisition Unit per 6 rotating machines** (within one plant)
- 1 Personal Computer with Windows-XP Professional®***

Optional Accessories

- Connection Cables and Accessories
- PD Capacitive Couplers

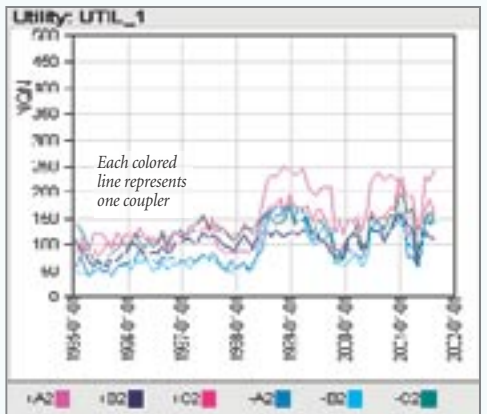
Assess Stator Winding Condition with Trending



PD•Watch records and updates the display of NQN or Qmax values for each coupler.

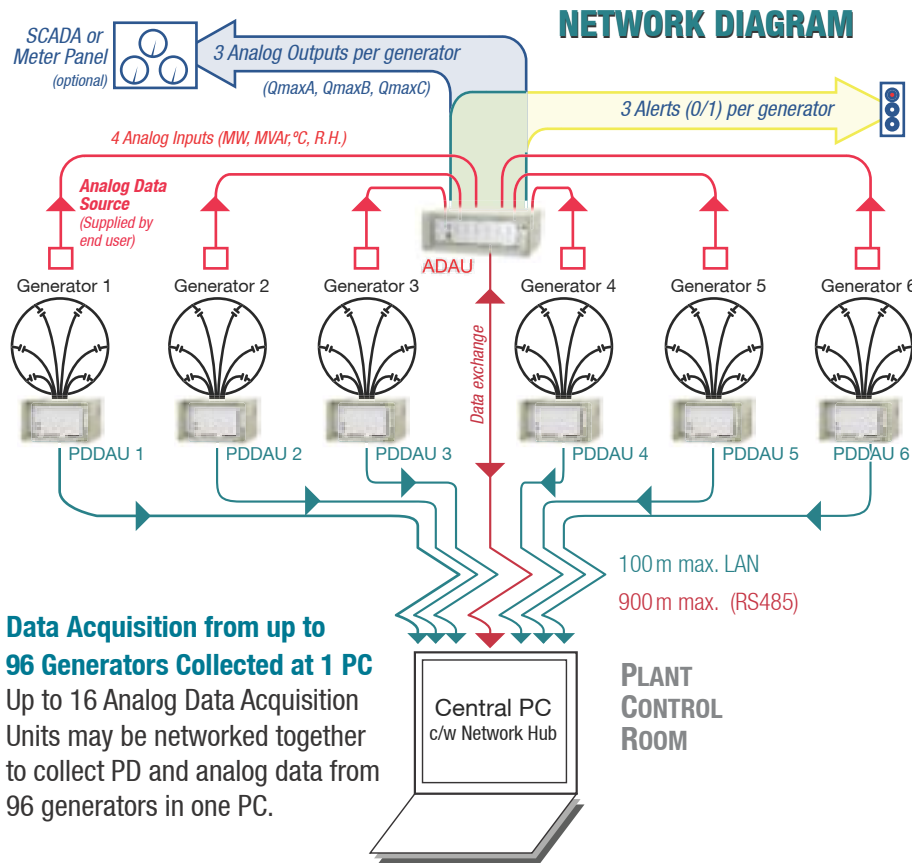
PD data can be easily exported to Microsoft Excel®* spreadsheets for further analysis and report generation.

PD Long Term Trend Analysis



Display the trend in PD activity over time. Trending is the best way to assess stator winding condition. Maintenance personnel can analyse the trends to make condition-based maintenance decisions.

*Windows XP and Microsoft Excel are registered trademarks of Microsoft Corp.



Data Acquisition from up to 96 Generators Collected at 1 PC
Up to 16 Analog Data Acquisition Units may be networked together to collect PD and analog data from 96 generators in one PC.

For Technical Specifications, please see additional documents.

Contact Authorized Distributor For Further Information and Pricing:

BANGLADESH
SIM International
333/1/C TV. Road
East Rampura
P.O: Khilgoan, Dhaka
Bangladesh

www.simintl.ca

Tel +88 (0) 175068227 (mobile)
Tel +88(02) 8331728
E-mail: info@simintl.ca